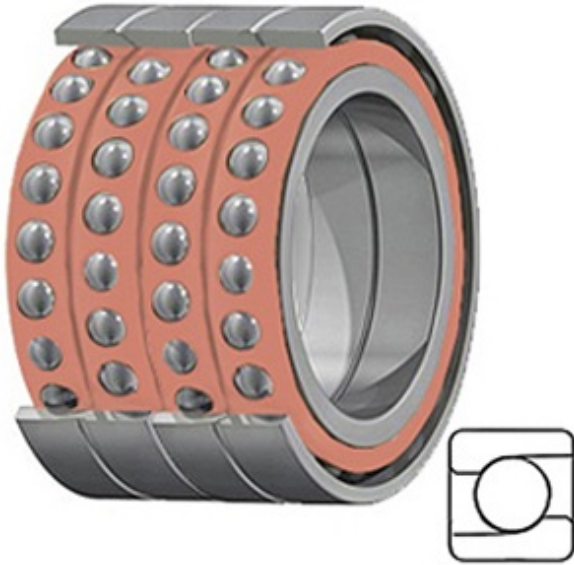




BEARING CORP.



MM30BS72 QUH Bearing 2D drawings and 3D CAD models

1.181 Inch | 30 Millimeter x 2.835 Inch | 72 Millimeter x 2.362 Inch | 60 Millimeter TIMKEN MM30BS72 QUH Precision Ball Bearings

Bearing No. MM30BS72 QUH

Category	Precision Ball Bearings
Inventory	0.0
Manufacturer Name	TIMKEN
Minimum Buy Quantity	N/A
Weight	1.308
EAN	0087796233232
Product Group	B04270
Enclosure	Open
Precision Class	ABEC 7 ISO P4
Material - Ball	Steel
Number of Bearings	4 (1 Quadruplex Set)
Contact Angle	60 Degree
Preload	Heavy
Raceway Style	1 Rib Inner Ring and Outer Ring
Cage Material	Phenolic
Rolling Element	Ball Bearing
Mounting Arrangement	Quadruplex-Universal
Flush Ground	Yes
Inch - Metric	Metric
Other Features	Single Row Angular Contact Ball Screw Support Super Precision With Tighter Lateral Eccentricity
Long Description	30MM Bore; 72MM



BEARING CORP.

	Outside Diameter; 60MM Width; Open Enclosure; ABEC 7 ISO P4 Precision; Steel Ball Material; 4 (1 Quadruplex Set) Bearings; 60 Degree Contact Angle; Phenolic Cage Material; 1 Rib Inne
Category	Precision Ball Bearings
UNSPSC	31171531
Harmonized Tariff Code	8482.10.50.28
Noun	Bearing
Keyword String	Angular Contact Ball
Manufacturer URL	http://www.timken.com
Manufacturer Item Number	MM30BS72 QUH
Weight / LBS	2.88
d	1.181 Inch 30 Millimeter
D	2.835 Inch 72 Millimeter
B	2.362 Inch 60 Millimeter