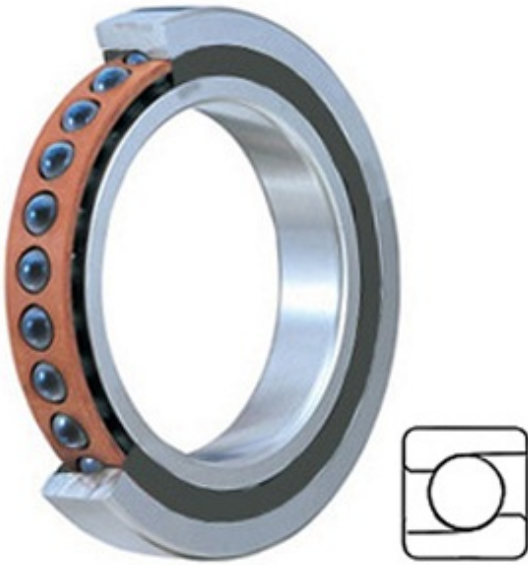




BEARING CORP.



1.575 Inch | 40 Millimeter x 2.677 Inch | 68
Millimeter x 0.591 Inch | 15 Millimeter TIMKEN
2MMVC9108HXVVSUMFS934 Precision Ball
Bearings

Bearing No. 2MMVC9108HXVVSUMFS934

2MMVC9108HXVVSUMFS934 Bearing 2D drawings
and 3D CAD models

Category	Precision Ball Bearings
Inventory	0.0
Manufacturer Name	TIMKEN
Minimum Buy Quantity	N/A
Weight	0.181
Product Group	B04270
Enclosure	2 Seals
Precision Class	ABEC 7 ISO P4
Material - Ball	Ceramic
Number of Bearings	1 (Single)
Contact Angle	15 Degree
Preload	Medium
Raceway Style	1 Rib Inner Ring and Outer Ring
Cage Material	Phenolic
Rolling Element	Ball Bearing
Enclosure Type	Non Contact Seal
Mounting Arrangement	Universal
Flush Ground	Yes
Inch - Metric	Metric
Other Features	Single Row Angular Contact Super High Precision Hybrid Corrosion Resistant Ball High Speed Seal



BEARING CORP.

Long Description	40MM Bore; 68MM Outside Diameter; 15MM Width; 2 Seals Enclosure; ABEC 7 ISO P4 Precision; Ceramic Ball Material; 1 (Single) Bearings; 15 Degree Contact Angle; Phenolic Cage Material; 1 Rib Inner Rin
Category	Precision Ball Bearings
UNSPSC	31171531
Harmonized Tariff Code	8482.10.50.28
Noun	Bearing
Keyword String	Angular Contact Ball
Manufacturer URL	http://www.timken.com
Manufacturer Item Number	2MMVC9108HXVVSUMF S934
Weight / LBS	0.4
D	2.677 Inch 68 Millimeter
B	0.591 Inch 15 Millimeter
d	1.575 Inch 40 Millimeter